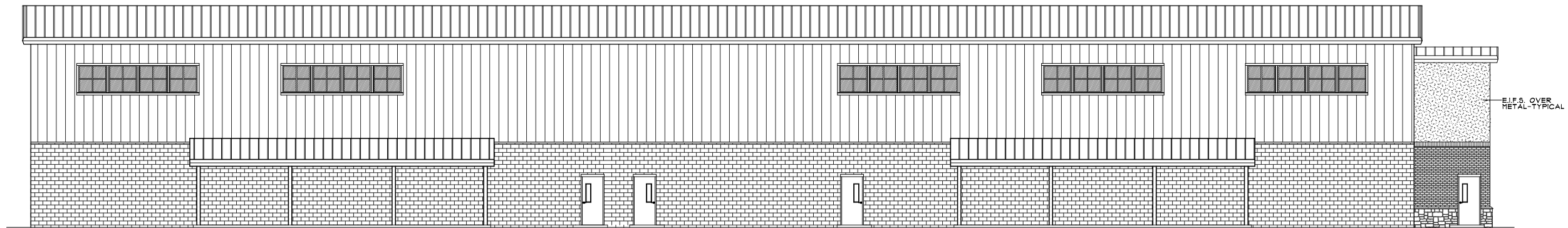
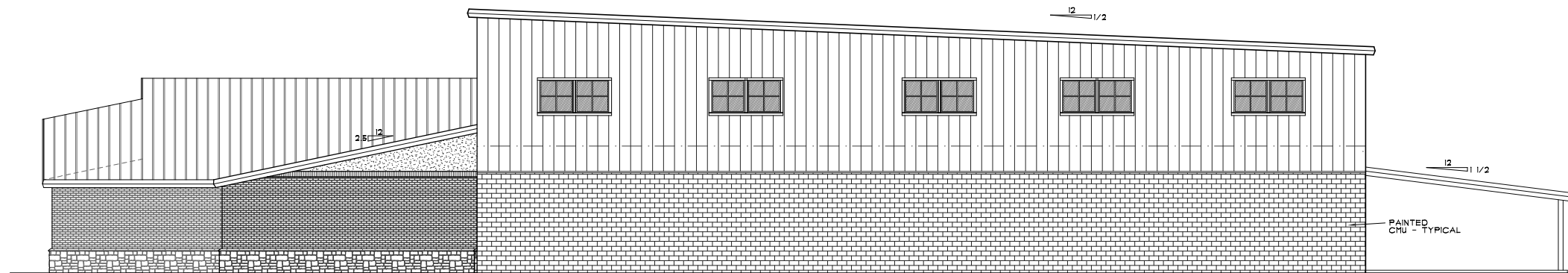


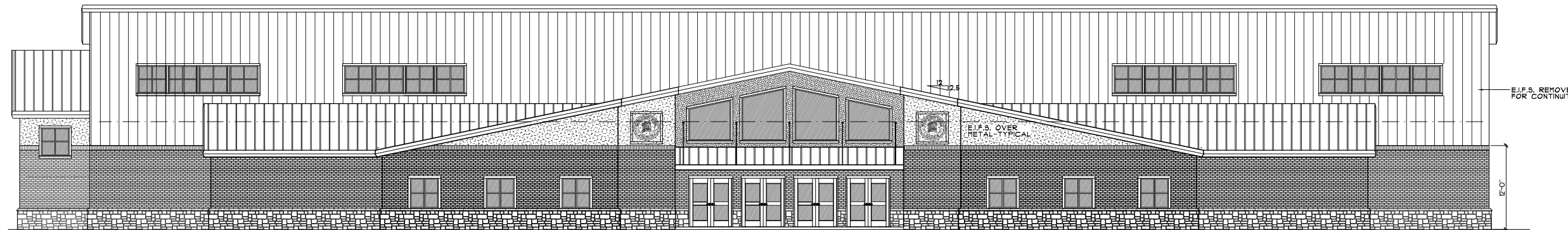
LEFT ELEVATION  
SCALE: 1/8" = 1'-0" 4



REAR ELEVATION  
SCALE: 1/8" = 1'-0" 3



RIGHT ELEVATION  
SCALE: 1/8" = 1'-0" 2



FRONT ELEVATION  
SCALE: 1/8" = 1'-0" 1

REVISIONS	
NO.	DATE DESCRIPTION

DATE OF THIS PLAN:  
Friday, March 14, 2008

SEAL

Homer Lewis & Associates, Inc.  
1035-E Green Street  
Coryers, Georgia 30012  
(678) 210-1001

NEW GYMNASIUM FOR  
WALTON COUNTY  
BOARD OF COMMISSIONERS  
105 GENERATION BLVD.  
LOGANVILLE, GEORGIA

NOT RELEASED FOR CONSTRUCTION	
DRAWN	XXX
CHECKED	XXX
JOB NUMBER	0809
SCALE	XXX
DATE	XXX
SHEET	A-4.0
X OF X	

L:\DWG\08\JOBS\0809\0809-A4.0-Exterior Elevations.rvt

DRAWINGS AND SPECIFICATIONS ARE INSTRUMENTS OF SERVICE AND SHALL REMAIN THE PROPERTY OF THIS CORPORATION WHETHER THE PROJECT FOR WHICH THEY ARE MADE IS EXECUTED OR NOT. THEY ARE NOT TO BE USED ON OTHER PROJECTS OR EXTENSIONS TO THIS PROJECT EXCEPT BY AGREEMENT IN WRITING AND APPROPRIATE COMPENSATION TO THIS CORPORATION.