

FY 2018 REVENUE WORKSHEET

Fund	Budget		Account	Account Title	FY 16	FY 17	FY 17	FY 18	Increase (Decrease)
	Unit	Budget Unit Title			Final Budget	Current Actual	Current Budget	Requested Amount	
540	4530	Solid Waste Disposal	32.1930	Waste Removal License Fees	\$2,000	\$0	\$2,500	\$2,500	\$0
540	4530	Solid Waste Disposal	34.4111	Recycling Hauling	\$172,305	\$61,530	\$165,000	\$165,000	\$0
540	4530	Solid Waste Disposal	34.4150	Landfill Use Fees	\$470,423	\$168,977	\$475,000	\$475,000	\$0
540	4530	Solid Waste Disposal	34.4190	Other Charges	\$61,670	\$26,950	\$72,500	\$72,000	(\$500)
540	9540	SW - Other Financing	39.1110	Op Transfer In From General Fund	\$505,265	\$0	\$117,085	\$0	(\$117,085)
540	9540	SW - Other Financing	39.3500	Capital Leases	\$224,220	\$0	\$0	\$0	\$0
					\$1,435,883	\$257,457	\$832,085	\$714,500	(\$117,585)

FY 2018 EXPENSE WORKSHEET

Fund	Budget		Account	Account Title	FY 16	FY 17	FY 17	FY 18	Increase (Decrease)
	Unit	Budget Unit Title			Final Budget	Current Actual	Current Budget	Requested Amount	
540	4530	Solid Waste Disposal	51.1100	Regular Employees	\$258,584	\$63,249	\$143,081	\$133,706	(\$9,375)
540	4530	Solid Waste Disposal	51.1200	Temporary Employees	\$89,879	\$61,791	\$43,158	\$90,000	\$46,842
540	4530	Solid Waste Disposal	51.1300	Overtime	\$1,272	\$612	\$1,000	\$1,000	\$0
540	4530	Solid Waste Disposal	51.2100	Group Insurance	\$48,129	\$11,907	\$46,394	\$52,460	\$6,066
540	4530	Solid Waste Disposal	51.2200	FICA Contribution	\$19,161	\$7,640	\$11,713	\$8,344	(\$3,369)
540	4530	Solid Waste Disposal	51.2300	Medicare	\$4,481	\$1,787	\$2,739	\$1,951	(\$788)
540	4530	Solid Waste Disposal	51.2410	Defined Contribution	\$20,458	\$37,112	\$27,006	\$19,699	(\$7,307)
540	4530	Solid Waste Disposal	51.2700	Worker's Comp	\$16,790	\$7,533	\$15,390	\$19,424	\$4,034
540	4530	Solid Waste Disposal	51.2910	Longevity	\$1,610	\$875	\$1,680	\$875	(\$805)
540	4530	Solid Waste Disposal	52.2110	Disposal of Garbage	\$100	\$0	\$500	\$500	\$0
540	4530	Solid Waste Disposal	52.2210	R & M - Vehicles	\$1,000	\$0	\$1,000	\$100	(\$900)
540	4530	Solid Waste Disposal	52.2220	R & M - Public Buildings	\$0	\$250	\$500	\$500	\$0
540	4530	Solid Waste Disposal	52.2250	R & M - Equipment	\$3,500	\$3,600	\$0	\$3,200	\$3,200
540	4530	Solid Waste Disposal	52.3300	Advertising	\$100	\$0	\$100	\$100	\$0
540	4530	Solid Waste Disposal	52.3400	Printing & Binding	\$100	\$0	\$100	\$100	\$0
540	4530	Solid Waste Disposal	52.3670	Landfill Tipping Fees	\$184,953	\$62,963	\$153,000	\$153,000	\$0
540	4530	Solid Waste Disposal	52.3850	Contract Labor	\$3,000	\$0	\$5,500	\$3,000	(\$2,500)
540	4530	Solid Waste Disposal	52.3990	Services - Uniform Cleaning	\$2,829	\$967	\$2,000	\$2,500	\$500
540	4530	Solid Waste Disposal	53.1100	General Supplies & Material	\$500	\$220	\$500	\$500	\$0
540	4530	Solid Waste Disposal	53.1200	Energy	\$4,500	\$1,264	\$4,500	\$4,500	\$0
540	4530	Solid Waste Disposal	53.1270	Gasoline / Diesel	\$21,204	\$4,558	\$21,993	\$10,959	(\$11,034)
540	4530	Solid Waste Disposal	53.1550	Garbage Bags for Resale	\$10,000	\$3,403	\$10,000	\$10,000	\$0
540	4530	Solid Waste Disposal	53.1600	Small Equipment	\$550	\$84	\$3,550	\$3,550	\$0
540	4530	Solid Waste Disposal	53.1607	Small Hand Tools	\$250	\$229	\$250	\$500	\$250
540	4530	Solid Waste Disposal	53.1700	Other - Uniforms	\$520	\$0	\$520	\$520	\$0
540	4530	Solid Waste Disposal	53.1750	Vehicle / Equipment Parts	\$10,245	\$9,059	\$5,000	\$20,000	\$15,000
540	4530	Solid Waste Disposal	54.1300	Buildings	\$0	\$0	\$0	\$12,000	\$12,000
540	4530	Solid Waste Disposal	54.2200	Vehicles	\$158,900	\$0	\$0	\$0	\$0
540	4530	Solid Waste Disposal	54.2500	Equipment	\$0	\$7,290	\$14,050	\$19,800	\$5,750
540	4530	Solid Waste Disposal	56.1000	Depreciation	\$85,895	\$0	\$0	\$0	\$0
540	4530	Solid Waste Disposal	58.1200	Capital Lease (Principal)	\$0	\$0	\$0	\$31,379	\$31,379
540	4530	Solid Waste Disposal	58.2200	Capital Lease (Interest)	\$0	\$0	\$0	\$1,804	\$1,804
					\$948,510	\$286,393	\$515,224	\$605,971	\$90,747

Small Equipment Request Fiscal Year 2018

Fund: 540
Department Name: Sanitation
Budget Unit: 4530

Specify small equipment requests. Add additional rows as needed.

Rank	N or R *	Small Equipment Requested	Description	Quantity	Cost per Item	Total Cost
1	both	Misc. Tools	Miscellaneous tools for trucks (mowers, blowers, etc.)	1	3,600	3,600
2						
3						
4						
5						
6						
7						
8						
9						
10						
11						
12						
13						
Total Cost of Small Equipment Request						3,600

* New or Replacement

Funding Source (check those that apply):

- General Fund
- Grant
- SPLOST
- Impact Fees
- Enterprise Fund
- Special Revenue Fund
- Other

Finance Use Only:	Date
Initiale Request Received	_____
Initial Request Entered	_____
Budget Request Presented	_____
Recommended Budget Entered	_____
Review by Finance	_____

Capital Equipment Request Fiscal Year 2018

Fund: 540
 Department Name: Sanitation
 Budget Unit: 4530

Specify Capital Equipment requests. Add additional rows as needed.

Rank	N or R *	Capital Equipment Requested	Description	Quantity	Cost per Item	Total Cost
1	R	Recycling Cans	3 bin Recycling cannister-glass/plastic recycling	1	6,300	6,300
2	R	Compactor	Marathon RJ100-SC Self-contained compactor/container	1	13,500	13,500
Total Cost of Capital Equipment Request						19,800

* New or Replacement

Project Justification:

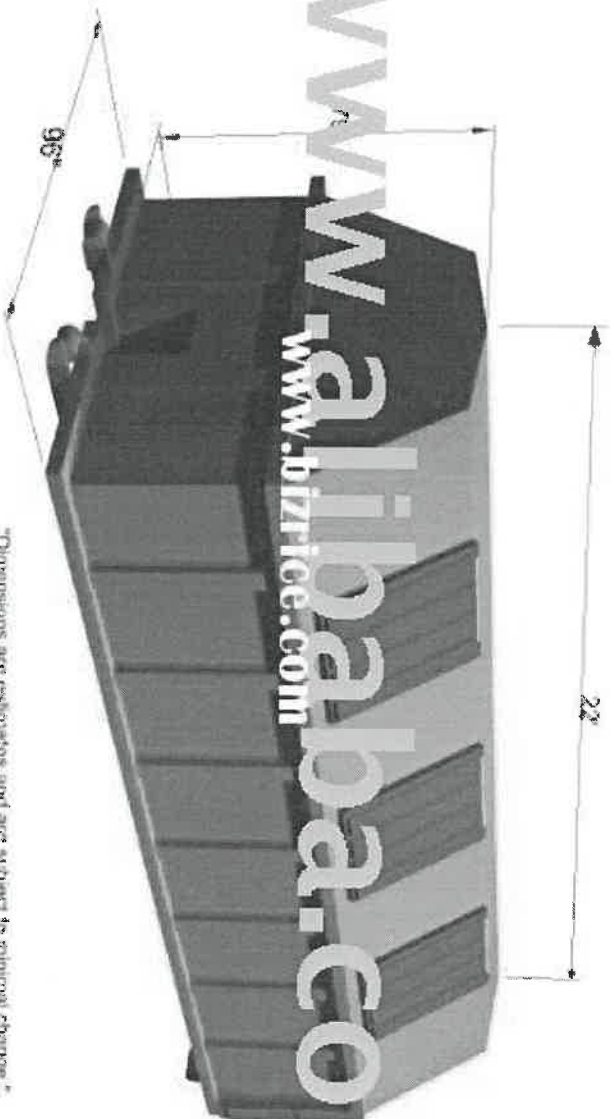
To prevent having to rent or borrow from the city.

We have on Self-Contained Compactor that is worn out on bottom beyond repair with the motor having been replaced several times.

Funding Source (check those that apply):

- General Fund
- Grant
- SPLOST
- Impact Fees
- Enterprise Fund
- Special Revenue Fund
- Other

Finance Use Only:	Date
Initial Request Received	_____
Initial Request Entered	_____
Budget Request Presented	_____
Recommended Budget Entered	_____
Review by Finance	_____



Dimensions are estimates and are subject to material change.

[> more details](#)

www.alibaba.com
www.bizrice.com

2017
#







QUOTATION

Quote Number: WCB0C-2916
 Quote Date: Feb 9, 2016
 Page: 1

Lewis Steel Works, Inc

P.O. Box 338
 613 South Main Street
 Wrens, GA 30833
 USA

Voice: (706) 547-6561
 Fax: (706) 547-3020

SHIP TO:

Quoted To:
 WALTON COUNTY BOC
 303 South Hammond Dr.
 MONROE, GA 30655
 USA

Customer ID	Good Thru	Payment Terms	Sales Rep
W-15999-01	3/10/16	Net 30 Days	

Quantity	Item	Description	Unit Price	Amount
1.00	30"OE REGULAR	30 YARD OPEN EZZEE ROLLOFF - PAINTED: green	3,445.00	3,445.00
1.00	40"OES	40 YARD OPEN EZZEE ROLLOFF - PAINTED: GREEN	3,945.00	3,945.00
1.00	FREIGHT	FREIGHT/ LOAD \$250	250.00	250.00
Subtotal				7,640.00
Sales Tax				
TOTAL				7,640.00

Computer print

SELF-CONTAINED

UNIT

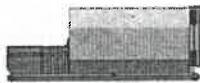
SELF-CONTAINED

UNIT



Typical with the Pandora Remote Monitoring System to make it our most popular compactor. Pandora makes you so productive, reduces your waste management costs. To find out more, call 1-800-451-6174. Visit our website: www.marathonrental.com

Pandora Platform Functionality
Operates all RJ-100SC Compactors



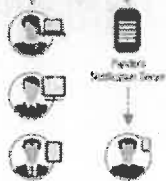
RJ-100SC
Compactor with PLC and wireless module



Storage electronics module



Pandora Server



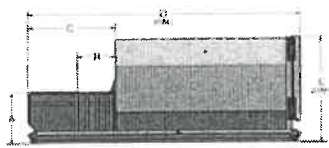
• Pandora will display when received status of a device or mobile PC. Safe removal of line
• Full coverage from any device or wireless device
• Working for and optimized to support kind of device in trailers

RJ-100SC Self-Contained Compactor/Container

Dimensions and Specifications

Dimensions	
Capacity	11.5 cu yd (8.8 cu m)
Clear Box Capacity (Net Weight)	11,500 lb (5,200 kg)
Clear Top Opening	85.1" (2170 mm) x 70.0" (1778 mm)
Performance Characteristics	
Cycle Time	37 sec
Total Normal Force	60,570 lb (27,000 kg)
Total Maximum Force	10,000 lb (4,500 kg)
Normal Ram Face Pressure	16,750 psi (1.16 MPa)
Maximum Ram Face Pressure	21,000 psi (1.45 MPa)
Ram Power/ton	6.7 hp (4.9 kW)
Electrical Specifications	
Electric Motor 1460/115-480	15 hp 7.5 kW
Electric Control Voltage	120 VAC
Panel Box Assembly	UL and OSHA Listed
All Cables Fused	1 Amp fuses
Hydraulic Specifications	
Hydraulic Pump	17.0 gpm (64.3 L/min)
Normal Pressure	1500 psi (103.4 bar)
Maximum Pressure	2000 psi (137.9 bar)
Hydraulic Cylinders (2) - Box	1.7 cu in (27.8 L)
- Ram	1.0 cu in (16.3 L)

RAMJET	A	B	C	D	E	WT
100 (21)	4'7"	9'7"	5'4"	10'11"	4'8"	5400 kg
	1280 mm	2916 mm	1327 mm	3276 mm	1419 mm	11750 kg
140 (30)	4'7"	9'7"	5'4"	10'11"	4'8"	5400 kg
	1280 mm	2916 mm	1327 mm	3276 mm	1419 mm	11750 kg



Dimensions not shown: 4'11" (1205 mm) Ram Face Width
Overall Ram Face Width: 4'11" (1205 mm) Ram Face Width
22' (6706 mm) Total Overall Length

Compactor Rental and Leasing Programs Available
For detailed specifications, recommendations, or for economic studies, comparing various options, contact Marathon Customer Care at 1-800-451-6174.



Authorized Dealer:

Marathon Equipment Company
P.O. Box 1209
Vestib, AL 35581-1798
100-833-8974
www.marathonrental.com
NAPA Contract #000613-ESG

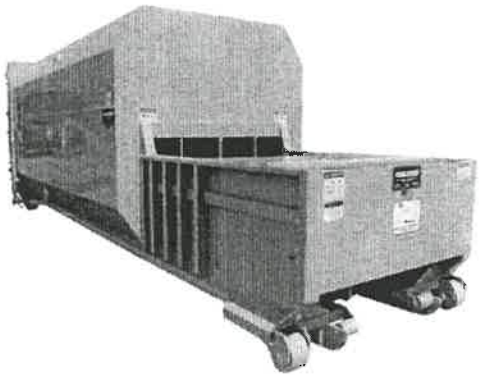
Environmental Solutions Group
www.esggroup.com

GSA

Marathon Equipment Company, all rights reserved. Printed in USA. | 2014-00111-1-000174



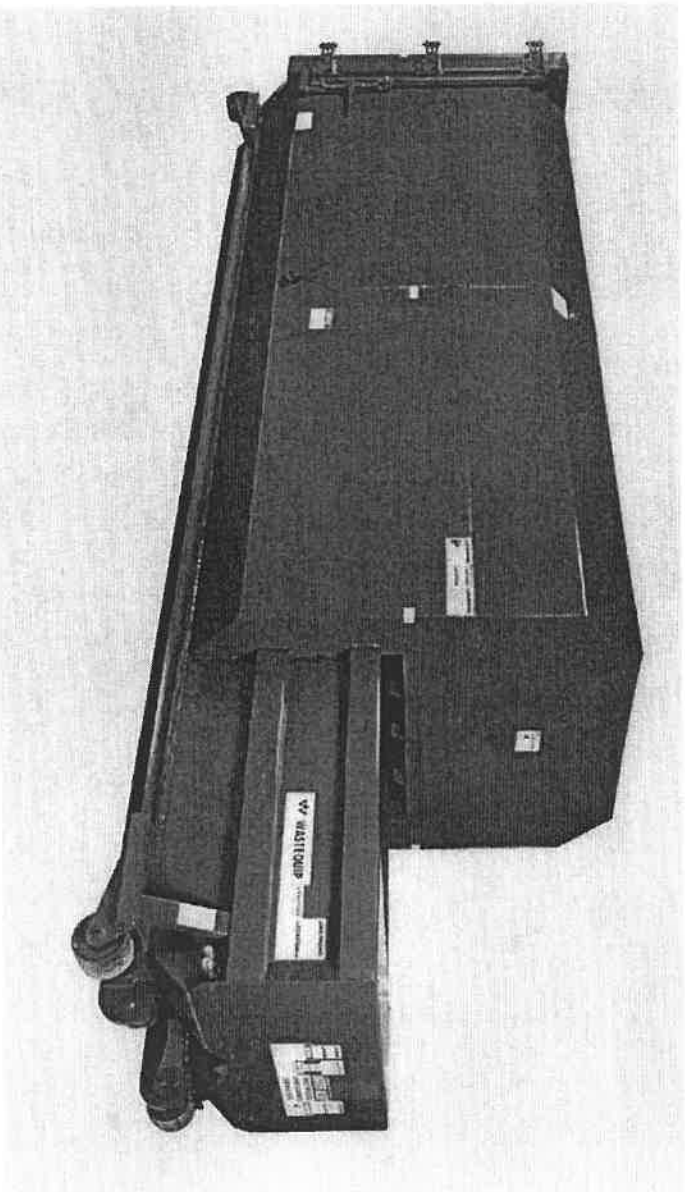
RJ-100SC Self-Contained Compactor/Container



• Compact
• In-flight controls
• Superior build
• Food processing
• Transportable
• Heavy-duty



13,500



Powered by Wastequip's Guardian control system with Automatic Maintenance Scheduler (AMS) to notify operators when scheduled maintenance is...

[Read More \(https://www.wastequip.com/products/265xp-precision-series-compact/\)](https://www.wastequip.com/products/265xp-precision-series-compact/)

Tradeshows & Events

02.17.16

Wastewater Equipment, Treatment & Transport Show (WWETT)

www.wastequip.com/tradeshows/water-wastewater-equipment-treatment-transport-show-wwett-1/

03.01.16

The Work Truck Show

[Read More \(https://www.wastequip.com/tradeshows/ntea/\)](https://www.wastequip.com/tradeshows/ntea/)

[Corporate Profile \(/about/\)](https://www.wastequip.com/about/)

[Brands \(/brands/\)](https://www.wastequip.com/brands/)

[Markets \(/markets/\)](https://www.wastequip.com/markets/)

[Products \(/products/\)](https://www.wastequip.com/products/)

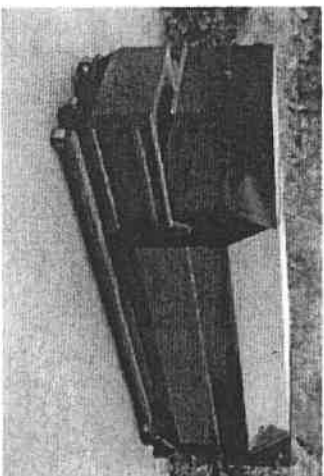
WasteCare Corporation is your source for commercial trash compactors, balers, waste equipment, recycling equipment, industrial shredders and grinders, and other waste related products and services.

[Home](#) > [SiteMap](#) > [Compactors](#) > [Self-Contained](#)

35 YARD SELF-CONTAINED COMPACTORS

With 2-Yard Charge Box

SC-3500 - 35 YD SELF-CONTAINED COMPACTOR



[Request Automated Response with general pricing \(Secure\)](#)
[Request info on Multiple Products \(Secure Area\)](#)

Note: Our Compactors Preliminary Considerations Checklist may be helpful

[Jump to Self-Contained Compactors Overview Page](#) showing all Models and a brief overview of some of the basic features

Helpful Articles for Deciding on 35 Yard Self Contained Compactors:

- [About Compactors](#)
- [Industrial Trash Compactors](#)
- [Waste Compactors- Reduce the Trash Burden](#)
- [Trash Compactors - Not Glamorous But Very Useful](#)
- [Trash Compactors - Purchase Considerations and Tips](#)
- [Trash Compactors - Preliminary Considerations Checklist!](#)
- [Waste Generated by Industry and Building Type \(in pounds\)](#)
- [Waste Generated by Industry and Building Type \(in Cubic Yards\)](#)

SPECIFICATIONS

35 YARD SELF-CONTAINED COMPACTOR - GENERAL INFORMATION

Model	Capacity	Weight	Dimensions
SC-3500-MRT	2	1,16	
SC-3500-WRT	35	42.5' x 57.5'	
SC-3500-CCP	30' x 60"	175	
SC-3500-RFC	278" L x 98" W x 105" H	10,500 lbs	
SC-3500-DMH			
SC-3500-WGT			

38 YARD SELF-CONTAINED COMPACTOR - FORCE & PRESSURE INFORMATION

Model	Capacity	Weight	Dimensions
SC-3500-CTI	33	40,824	
SC-3500-NFP	22.7	6.5"	
SC-3500-RFP			
SC-3500-RPN			

38 YARD SELF-CONTAINED COMPACTOR - HYDRAULIC / ELECTRICAL INFORMATION

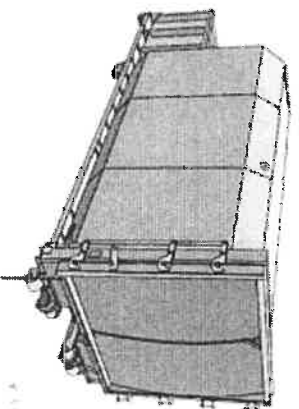
Model	Capacity	Weight	Dimensions
SC-3800-MTR	19	120 VAC	
SC-3500-CVL	11.5	1,800	
SC-3500-PSP	2,100	4'7" x 2	
SC-3500-NSP	32"	25	
SC-3500-CBR			
SC-3500-STK			
SC-3500-HTC			

35 Yard Self Contained Compactors
38 YARD SELF CONTAINED COMPACTOR - CONSTRUCTION INFORMATION

	SC-3500-CBS	1/4"
	SC-3500-VHF	7 Ga
	SC-3500-CBF	1/2"
	SC-3500-RFC	1/2"
	SC-3500-RRT	3/8"
	SC-3500-RTP	1/4"
	SC-3500-BBS	5" x 8" x 3/4"
	SC-3500-LGS	6" x 2" x 1/4"
	SC-3500-UFL	7 Ga
	SC-3500-CSD	7 Ga
	SC-3500-TOP	10 Ga
	SC-3500-DJR	10 Ga

	SC-3500-01 - Rear Feed Hopper, Walk on Deck with Hand & Toe Rails, Access Gate & Interlock Safety Switch
	SC-3500-02 - Rear Feed Hopper, Drive on Deck with Hand & Toe Rails & Interlock Safety Switch
	SC-3500-03 - Rear Load Hopper (3-Sided) & Gate
	SC-3500-04 - Rear Load Hopper (4-Sided)
	SC-3500-05 - Side Load Hopper (3-Sided)
	SC-3500-06 - Doghouse with 1 Door
	SC-3500-07 - Additional Door
	SC-3500-08 - Enclosed Hopper w/Cellar Style Rear Doors
	SC-3500-09 - Dock Level Hopper Side Load
	SC-3500-10 - Dock Level Hopper Rear Load
	SC-3500-11 - Security Door and Frame 40" x 40"
	SC-3500-12 - Doghouse Enclosed for Chute
	SC-3500-13 - Hinged Breaker Bar Teeth
	SC-3500-14 - Container Guides 5'
	SC-3500-15 - Remote Controls on 15
	SC-3500-16 - Advance Warning Light
	SC-3500-17 - Container Full Light
	SC-3500-18 - Hold to Run "Deadman"
	SC-3500-19 - Auto Timer Start with Shutdown
	SC-3500-20 - Multi Cycle Timer
	SC-3500-21 - Additional Controls Station
	SC-3500-22 - Photo Eye Start
	SC-3500-23 - Oil Heater 208/230
	SC-3500-24 - Low Oil / Hi Temp Shutdown
	SC-3500-25 - Ozone Odor Control
	SC-3500-26 - Hydraulic Oil Cooler (10 HP - 15 HP Units)
	SC-3500-27 - Jog Control

SC-3500 Self Contained Compactors Dimension Diagram



Note: Specifications, Dimensions & other product details may vary slightly upon delivery due to continuous product progressive and improvement. If excavators is notified or any service(s) confirm in writing before ordering. In our efforts to provide products with the most up to date engineering and design, we reserve the right to change specifications, dimensions and other product details without notice.

Performance may vary depending upon application.

Products must be installed and operated according to required standards, codes, regulations and safety procedures.



Follow Us on Facebook



Follow Us on Twitter



Subscribe to Our Feed